

# BH

GENERATORI D'ARIA CALDA PENSILI A COMBUSTIONE INDIRECTA  
INDIRECT COMBUSTION SUSPENDED SPACE HEATERS

## Get In Touch

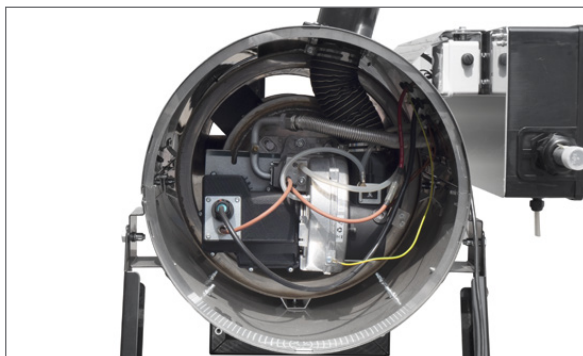
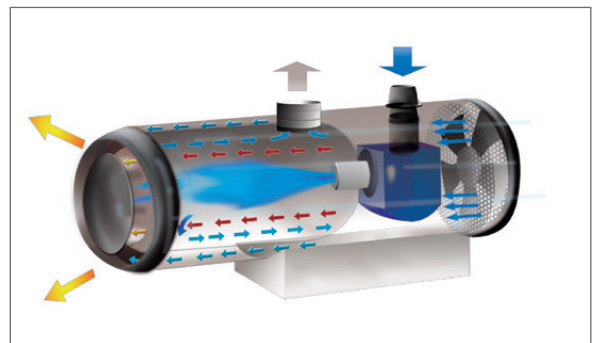
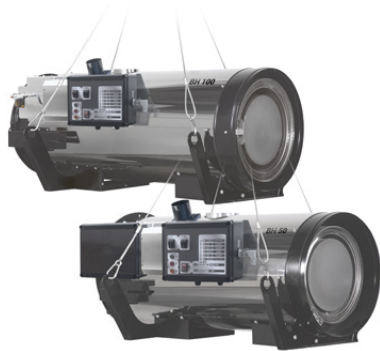
 Call: [0845 6880112](tel:08456880112)  
 Email: [info@adremi.co.uk](mailto:info@adremi.co.uk)

## Our Address

Puravent, Adremi Limited, Unit 5a, Commercial Yard,  
Settle, North Yorkshire, BD24 9RH



- Struttura interna ed esterna in acciaio inox AISI 430
- Bruciatore automatico separato a gasolio o a gas
- Ribaltamento ventilatore per facile manutenzione-sostituzione del bruciatore
- Controllo elettronico di fiamma
- Termostato automatico di FAN per ventilare solo aria calda, con il pre-riscaldamento della camera di combustione e post-ventilazione di raffreddamento
- Termostato automatico di LIMIT per il controllo del bruciatore
- Termostato OVERHEATING di surriscaldamento a riarmo manuale
- Commutatore inverno-estate per utilizzo come ventilatore
- Pressostati di sicurezza (aria e gas)
- Scambiatore di calore e camera di combustione in acciaio inox AISI 430 a quattro giri di fumo
- Quadro elettrico protezione IP65
- Possibilità di interfaccia con termostato, umido stato o timer
- Predisposizione per collegamento ad impianto centralizzato di climatizzazione
- Rampa gas: gruppo valvole completo di filtro gas, regolatore di pressione, elettrovalvola di sicurezza, elettrovalvola di lavoro ad apertura lenta, stabilizzatore, prese di pressione.
- Completo di attacco snorkel di serie per presa aria di combustione pulita dall'esterno
- *High-grade AISI 430 stainless steel body and combustion chamber*
- *Automatic oil or NATURAL / LPG gas separate burner*
- *Tipping fan for easy burner maintenance or replacement*
- *Electronic control flame box*
- *FAN automatic thermostat for hot air blowing, with combustion chamber pre-warming and after cooling cycle*
- *LIMIT automatic thermostat to control the burner*
- *Safety OVERHEATING manual reset thermostat*
- *Summer-winter switch to use as a fan*
- *Air and gas safety pressure switches*
- *Four smoke loops AISI 430 stainless steel combustion chamber and heat exchanger*
- *IP65 electric board grade protection*
- *Connectable to a thermostat, humidistat or timer*
- *Connectable to a climate computer*
- *Gas train: gas safety box with gas filter, pressure reducer, safety solenoid valve, slow action work solenoid valve, stabilizer, gas pressure connections*
- *Snorkel connection adapter to allow outside clean combustion air feed*



### Get In Touch

Call: [0845 6880112](tel:08456880112)  
 Email: [info@adremit.co.uk](mailto:info@adremit.co.uk)

### Our Address

Puravent, Adremit Limited, Unit 5a, Commercial Yard,  
 Settle, North Yorkshire, BD24 9RH

ACCESSORI A RICHIESTA / ACCESSORIES ON DEMAND







<p>TERMOSTATO AMBIENTE +5/+30°C CON CAVO L=10 m E SPINA 90° ROOM THERMOSTAT +5/+30°C CABLE 10 m, PLUG 90°</p>	<p>TERMOSTATO AGRICOLTURA/CAN- TIERE -5/+50°C CON CAVO L=10 m E SPINA 90° HEAVY DUTY THERMOSTAT -5/+50°C CABLE 10 m, PLUG 90°</p>	<p>TERMOSTATO ELETTRONICO DI PRECISIONE IP55 CON DISPLAY -10/+70°C SENZA CAVO E SPINA ELECTRONIC THERMOSTAT IP55 WITH DISPLAY -10/+70°C WITHOUT POWER CORD AND PLUG</p>
		
<p>Cod. 02AC581</p>	<p>Cod. 02AC582</p>	<p>Cod. 02AC294</p>
<p>KIT DI SOSPENSIONE SUSPENSION KIT</p>	<p>KIT DI INFORCAMENTO FORK LIFT ADAPTER KIT</p>	<p>KIT COLLEGAMENTO BITUBO SERBATOIO ESTERNO GASOLIO (l= 5 m) + KIT ATTACCHI RAPIDI TWO-PIPE EXTERNAL FUEL TANK CONNECTION KIT (l=5 m) + QUICK CONNECTIONS KIT</p>
		
<p>Mod. BH 50 Cod. 02AC639</p>	<p>Mod. BH 50 Cod. 02AC640</p>	<p>Mod. Kit collegamento bitubo serbatoio esterno/ Two-pipe external tank connection kit Cod. 02AC668</p>
<p>Mod. BH 100 Cod. 02AC641</p>	<p>Mod. BH 100 Cod. 02AC642</p>	<p>Mod. Kit attacchi rapidi (M+F x 2)/ Quick connections kit (M+F x 2) Cod. 02AC669</p>
<p>FILTRO GASOLIO RISCALDANTE PRE-HEATED FUEL FILTER</p>	<p>KIT COLLEGAMENTO SERBATOIO ES- TERNO MONOTUBO CON DE-AERATORE SINGLE-PIPE EXTERNAL FUEL TANK CONNECTION KIT WITH DE-AERATOR</p>	<p>FILTRO SEPARATORE ACQUA ANTI-WATER FILTER</p>
		
<p>Cod. 02AC548</p>	<p>Cod. 02AC633</p>	<p>Cod. 02AC634</p>
<p>KIT TEMPORIZZATORE PER ACCENSIONE MACCHINE CON TEMPI DIFFERITI E SEQUENZIALI DELAYED AND SEQUENTIAL STARTING RELAY</p>	<p>CONVERSA PASS PLATE</p>	<p>KIT ANTICONDENSA DRAINING KIT</p>
		
<p>Cod. 02AC586</p>	<p>Mod. Ø 150 mm Cod. 02AC432</p>	<p>Mod. Ø 150 mm raccordo a T - T connection Cod. 02AC459 Mod. Ø 150 mm terminale anticondensa - antiwater chimney pot Cod. 02AC460</p>

Get In Touch

Call: 0845 6880112  
Email: [info@adremit.co.uk](mailto:info@adremit.co.uk)

Our Address

Puravent, Adremit Limited, Unit 5a, Commercial Yard,  
Settle, North Yorkshire, BD24 9RH

<b>KIT REGOLATORE GAS CON FILTRO</b> <b>GAS REGULATOR KIT WITH FILTER</b> (P.in MAX 6 bar)	<b>FILTRO REGOLATORE GAS</b> <b>GAS FILTER REGULATOR</b> (P.in MAX 2 bar)	<b>FILTRO GAS</b> <b>GAS FILTER</b> (P.in MAX 2 bar)
		
<b>Mod. GPL - LPG</b> (DN 25 3/4" or 1") (P.out set. 30mbar) <b>Cod. 03AC619</b>	<b>Mod. GAS METANO - NATURAL GAS</b> (DN 25 3/4" or 1") (P.out set. 20mbar) <b>Cod. 03AC617</b>  <b>Mod. GPL - LPG</b> (DN 25 3/4" or 1") (P.out set. 30mbar) <b>Cod. 03AC618</b>	<b>Mod. BH 50 (DN 20 - 3/4")</b> <b>Cod. 03AC600</b>  <b>Mod. BH 100 (DN 25 - 1")</b> <b>Cod. 03AC603</b>
<b>KIT VALVOLA MASSIMA PRESSIONE</b> <b>MAX GAS PRESSURE PROTECTION VALVE</b> <b>KIT</b> (200 mbar)	<b>TUBO GAS MEDIA PRESSIONE (l= 3 m) +</b> <b>VALVOLA CHIUSURA + RACCORDI COLLEGA-</b> <b>MENTO</b> <b>MEDIUM PRESSURE GAS HOSE (l= 3 m)</b> <b>+ GAS VALVE + CONNECTIONS</b> (P. MAX 5 bar)	<b>TUBO GAS BASSA PRESSIONE (l= 2 m)</b> <b>+ VALVOLA CHIUSURA</b> <b>+ RACCORDI COLLEGAMENTO</b> <b>LOW PRESSURE GAS HOSE (l= 2 m)</b> <b>+ GAS VALVE + CONNECTIONS</b> (P.in MAX 0,5 bar)
		
<b>Mod. G 3/4"</b> <b>Cod. 03AC620</b>	<b>Mod. BH 50 Tubo/Hose gas 3/4"</b> <b>Cod. 03AC614</b>  <b>Mod. BH 100 Tubo/Hose gas 1"</b> <b>Cod. 03AC615</b>	<b>Mod. BH 50 Tubo/Hose gas 3/4"</b> <b>Cod. 03AC611</b>  <b>Mod. BH 100 Tubo/Hose gas 1"</b> <b>Cod. 03AC612</b>

Get In Touch

 **Call:** 0845 6880112  
 **Email:** [info@adremiit.co.uk](mailto:info@adremiit.co.uk)

Our Address

Puravent, Adremiit Limited, Unit 5a, Commercial Yard,  
 Settle, North Yorkshire, BD24 9RH

KIT A RICHIESTA / KIT ON DEMAND

N°	COD.	DESCRIZIONE - DESCRIPTION
-	<b>02AC918</b>	<b>KIT CAMINO E SNORKEL CHIMNEY AND SNORKEL KIT</b>
1	02AC577	Guaina l= 5 m (Ø 100 mm) Duct l= 5 m (Ø 100 mm)
2	02AC793	Passaparete (Ø 100 mm) Snorkel pass plate (Ø 100 mm)
3	02AC285	Tubo scarico fumi in inox l= 1m (Ø 150 mm) Stainless steel exhaust pipe l= 1m (Ø 150 mm)
4	02AC288	Curva a 90° scarico fumi in inox (Ø 150 mm) Stainless steel exhaust elbow (Ø 150 mm)
5	02AC455	Raccordo coibentato Insulated junction
6	02AC452	Tubo dritto coibentato Insulated straight pipe
7	02AC453	Raccordo coibentato Insulated junction
8	02AC437	Fascetta murale Wall support collar
9	02AC465	Terminale per camino in inox (Ø 150 mm) Stainless steel chimney pot (Ø 150 mm)
10	02AC449	Fascetta fissaggio tubi (tubi singola parete) (x7) Pipe fixing clip (single wall pipe) (x7)
11	02AC454	Fascetta fissaggio tubi (tubi doppia parete) (x3) Pipe fixing clip (double wall pipe) (x3)

N°	COD.	DESCRIZIONE - DESCRIPTION
-	<b>02AC951</b>	<b>KIT CAMINO E SNORKEL COIBENTATO INSULATED CHIMNEY AND SNORKEL KIT</b>
1	02AC285	Tubo scarico fumi in inox l= 1m (Ø 150 mm) Stainless steel exhaust pipe l= 1m (Ø 150 mm)
2	02AC288	Curva a 90° scarico fumi in inox (Ø 150 mm) Stainless steel exhaust elbow (Ø 150 mm)
3	02AC945	Raccordo per snorkel tripla coibentazione (Ø 250 mm) Triple insulation snorkel junction (Ø 250 mm)
4	02AC943	Tubo in inox tripla coibentazione l= 1m (Ø 250 mm) Triple insulation stainless steel pipe l= 1m (Ø 250 mm)
5	02AC944	Curva a 90° in inox tripla coibentazione (Ø 250 mm) Triple insulation stainless steel elbow (Ø 250 mm)
6	02AC946	Raccordo di chiusura Closing junction
7	02AC950	Tubo in inox tripla coibentazione l= 1m (Ø 150 mm) Triple insulation stainless steel pipe l= 1m (Ø 150 mm)
8	02AC947	Terminale per camino antivento in inox (Ø 200 mm) Stainless steel windproof chimney pot (Ø 200 mm)
9	02AC478	Fascetta murale (Ø 250 mm) Wall support collar (Ø 250 mm)
10	02AC948	Fascetta fissaggio tubi (Ø 250 mm) (x5) Pipe fixing clip (Ø 250 mm) (x5)
11	02AC450	Fascetta fissaggio tubi (Ø 200 mm) (x3) Pipe fixing clip (Ø 200 mm) (x3)
12	02AC949	Guaina l= 1,5 m (Ø 100 mm) Duct l= 1,5 m (Ø 100 mm)

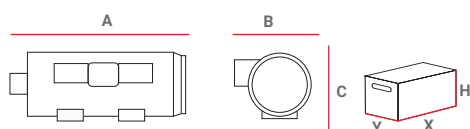
Get In Touch

Call: 0845 6880112  
Email: [info@adremit.co.uk](mailto:info@adremit.co.uk)

Our Address

Puravent, Adremit Limited, Unit 5a, Commercial Yard,  
Settle, North Yorkshire, BD24 9RH

# BH - GENERATORI D'ARIA CALDA PENSILI A COMBUSTIONE INDIRECTA INDIRECT COMBUSTION SUSPENDED SPACE HEATERS



PESI E DIMENSIONI MACCHINA WEIGHTS AND DIMENSIONS MACHINE					IMBALLO PACKAGING			
MOD	A	B	C	Netto/Net	X	Y	H	Lordo/Gross
	[mm]	[mm]	[mm]	[kg]	[mm]	[mm]	[mm]	[kg]
BH 50	1.351	625	643	80	1.440	780	761	105
BH 100	1.776	866	768	140	1.830	925	901	158

		BH 50 (GASOLIO-OIL)	BH 50 (METANO-NATURAL GAS)	BH 50 (GPL-LPG)
codice - code		02BH111	02BH112	02BH113
potenza term. nominale - rated heat power	Hs [kW] Hs [kcal/h - BTU/h]	49,8 42.869 - 170.619	49,02 42.143 - 168.612	50,02 43.020 - 172.081
potenza term. resa - output heat power	Hs [kW] Hs [kcal/h - BTU/h]	45,6 39.225 - 156.116	44,89 38.608 - 154.431	46,25 39.772 - 159.089
rendimento - heat efficiency	[ % ]	91,5	91,6	92,5
portata d'aria - air flow	[m <sup>3</sup> /h]	4.500	4.500	4.500
salto termico - temperature rise	a 20°C [ °C ]	53	57	57
consumo gasolio - oil consumption	[kg/h]	3,94	-	-
consumo metano - natural gas consumption G20	[ m <sup>3</sup> /h ]	-	4.500	-
pressione alim. - inlet pressure G20	[ mbar ]	-	20	-
consumo GPL - LPG consumption G31	[ m <sup>3</sup> /h - kg/h ]	-	-	1,842 - 3,69
pressione alim. - inlet pressure G31	[ mbar ]	-	-	30/37
potenza elettrica - power consumption 230V	[ W ]	750	680	680
alimentazione elettrica - electrical power	[ V - ph - Hz ]	230 - 1 - 50	230 - 1 - 50	230 - 1 - 50
Ø camino - Ø flue	[mm]	150	150	150
quantità per pallet - pallet quantities	[ pz - pcs ]	1	1	1

		BH 100 (GASOLIO-OIL)	BH 100 (METANO-NATURAL GAS)	BH 100 (GPL-LPG)
codice - code		02BH121	02BH122	02BH123
potenza term. nominale - rated heat power	Hs [kW] Hs [kcal/h - BTU/h]	99,8 85.869 - 341.757	99,45 85.524 - 342.096	97,24 83.623 - 334.491
potenza term. resa - output heat power	Hs [kW] Hs [kcal/h - BTU/h]	89,9 77.282 - 307.581	89,10 76.630 - 306.518	85,54 76.147 - 304.588
rendimento - heat efficiency	[ % ]	90	90	91,1
portata d'aria - air flow	[m <sup>3</sup> /h]	8.500	8.500	8.500
salto termico - temperature rise	a 20°C [ °C ]	58	59	59
consumo gasolio - oil consumption	[kg/h]	7,9	-	-
consumo metano - natural gas consumption G20	[ m <sup>3</sup> /h ]	-	9.102	-
pressione alim. - inlet pressure G20	[ mbar ]	-	20	-
consumo GPL - LPG consumption G31	[ m <sup>3</sup> /h - kg/h ]	-	-	3,547 - 7,11
pressione alim. - inlet pressure G31	[ mbar ]	-	-	30/37
potenza elettrica - power consumption 230V	[ W ]	1.170	1.150	1.150
alimentazione elettrica - electrical power	[ V - ph - Hz ]	230 - 1 - 50	230 - 1 - 50	230 - 1 - 50
Ø camino - Ø flue	[mm]	150	150	150
quantità per pallet - pallet quantities	[ pz - pcs ]	1	1	1

BIEMMEDUE S.p.A. Via Industria, 12 - 12062 Cherasco (CN) - Italy - T. +39 0172 486111 - F. +39 0172 488270  
bm2@biemmedue.com - www.biemmedue.com

## Get In Touch

Call: 0845 6880112  
Email: [info@adremit.co.uk](mailto:info@adremit.co.uk)

## Our Address

Puravent, Adremit Limited, Unit 5a, Commercial Yard,  
Settle, North Yorkshire, BD24 9RH