



SYSHP MINI SPLIT Air Cooled Heat Pumps

6-16 kW • R32 • Mini Split air-cooled heat pumps suitable for domestic installations

- R32 low GWP refrigerant
- Heating, cooling and DHW production
- High efficiency and low noise Inverter compressor
- Possible integration with solar panel and gas boiler
- Remotely controllable
- Precise and complete selection on AC SELECT

[Find more details in our online catalogue](#)

Use of green energy

The required energy for heating and DHW production is mainly extracted from the outside air. This enables to achieve the highest energy efficiency classes and reduce operating costs.

Sustainable refrigerant

The range operates with R32. Thanks to a GWP (Global Warming Potential) of 675, this refrigerant is 3 times less polluting than the standard R410A.

Silent mode

SYSHP MINI SPLIT heat pumps can be operated in two different silent modes. Depending on the mode, a noise reduction up to approximately 8 dB is possible.

Inverter technology

Outdoor units are equipped with a DC Twin-rotary inverter compressor. This allowing significant reduction of energy consumption and sound levels.

High performance

The SYSHP MINI SPLIT units provide high leaving water temperature up to 65°C and operate down to -25 °C OAT in heating mode and Domestic Hot Water production.

Electronic expansion device

Excellent control of superheating for the best performance at full and partial load and for a safe operation.

Certifications



Get In Touch

Call: 0845 6880112
 Email: info@adremit.co.uk

Our Address

Puravent, Adremit Limited, Unit 5a, Commercial Yard, Settle, North Yorkshire, BD24 9RH



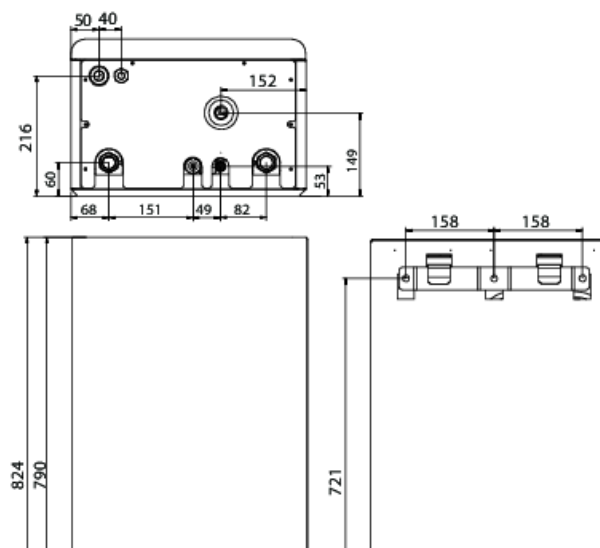
Technical parameters

General data	
Frequency	50 Hz
Phases	1~
Voltage (nominal)	230 V

Sound data	
Sound power level	38 dB(A)
Sound pressure level at 1m, outdoor unit	28 dB(A)

Dimensions and weights	
Weight	37 kg

Dimension



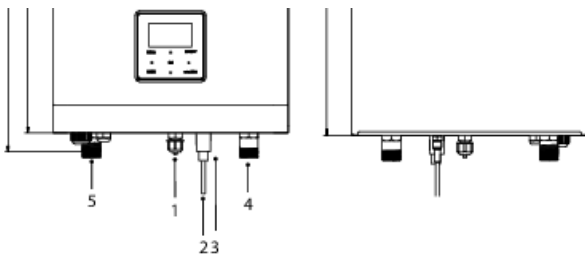
Article name: SYSHP MINI SPLIT HYDRO 06 Q | Product link: <https://shop.systemair.com/en-GB/productPermalink?p=611455> | Item Number: 319337 | Variant: 230V 1~ 50Hz
| Document type: Product card | Created at: 17.09.2024 | Generated by: Systemair Online Catalogue | Language: English

Get In Touch

Call: 0845 6880112
 Email: info@adremit.co.uk

Our Address

Puravent, Adremit Limited, Unit 5a, Commercial Yard,
Settle, North Yorkshire, BD24 9RH



Dimensions

Length mm 420

Width mm 270

Height mm 790

Components

1	Refrigerant gas connection 5/8"-14UNF
2	Refrigerant liquid connection 1/4"(60) or 3/8"(100/160) -14UNF
3	Drainage Ø 25
4	Water Inlet R1"
5	Water Outlet R1"

Get In Touch

Call: [0845 6880112](tel:08456880112)
 Email: info@adremit.co.uk

Our Address

Puravent, Adremit Limited, Unit 5a, Commercial Yard,
 Settle, North Yorkshire, BD24 9RH





Documents

- EDM SYSHP MINI SPLIT 06-16
- EU DECLARATION SYSHP MINI.pdf
- IOM SYSHP MINI HYDRO
- OM SYSHP MINI SPLIT
- CD_SYSHP MINI SPLIT R32 HYDRO_DWG
- ENERGIE_LABEL_SYSHP_MINI_SPLIT_240312.PDF
- QUICK_GUIDE_SYSHP_HEAT_PUMP_202402_GB.PDF

Get In Touch

 **Call:** [0845 6880112](tel:08456880112)
 **Email:** info@adremit.co.uk

Our Address

Puravent, Adremit Limited, Unit 5a, Commercial Yard,
Settle, North Yorkshire, BD24 9RH