

# KTEX 50-25-4(230V/3~) (ATEX)

Item no. 19403

Document type: **Product card**  
 Document date: **2019-07-10**  
 Generated by: **Systemair Online Catalogue**

## Description

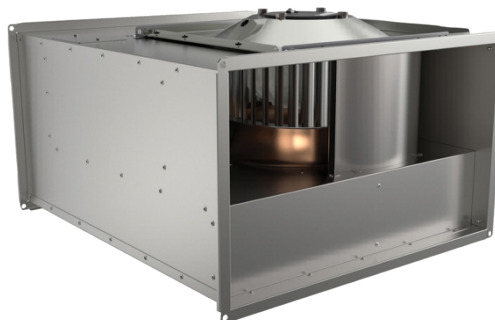
- Certified according to ATEX
- Speed controllable
- Integral thermistors (PTC \*)
- Maintenance-free and reliable

KTEX fans can be installed in any position and are easy to connect using the DS flexible connections. These fans have impellers with forward-curved blades and external rotor motors. The casing is manufactured from galvanised sheet steel, with a copper inlet cone.

To protect the motor from overheating, these fans have integral thermistors (PTC) with external leads which must be connected to the U-EK230E motor protection relay.

Explosion proof versions comply with EN 50014, EN 50019, EN 1127-1 and EN 13463-1. Improved safety in accordance with EEx e II T3. ex II 2G

\* Positive Temperature Coefficient

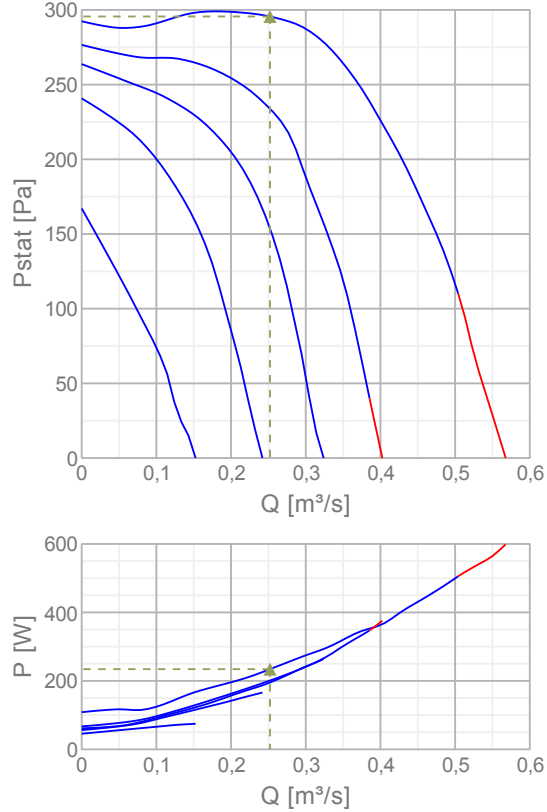


## Technical parameters

Nominal data		
Frequency	50	Hz
Voltage	230	V
Phase	3	~
Input power (P1)	506	W
Current	1,54	A
Max. airflow	0,504	m³/s
R.p.m.	1300	r.p.m.
Min. static back pressure	110	Pa
Weight	18,2	kg
Temperature data		
Temperature range, ambient and duct	-20-40	°C
Sound data		
Sound pressure level at 3 m	50,2	dB(A)
Protection / Classification		
Insulation class	F	
Enclosure class, motor	IP44	
Certificate	Presafe 17ATEX9970X	
Explosion proof	Ex eb IIB+H2 T3 Gb	

## Diagrams

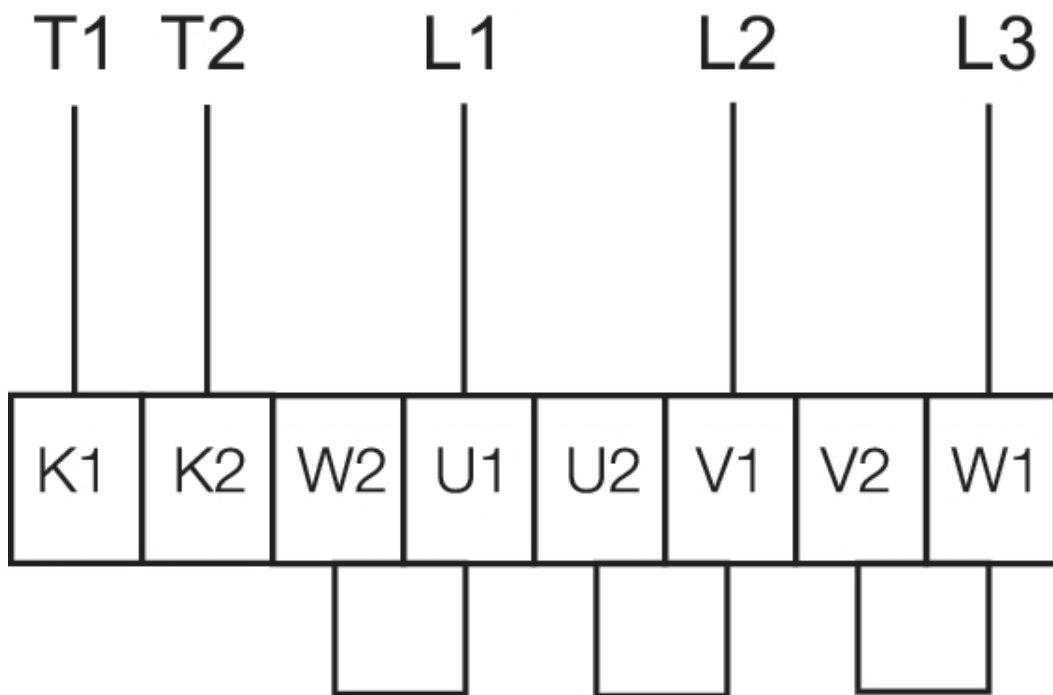
### Diagrams



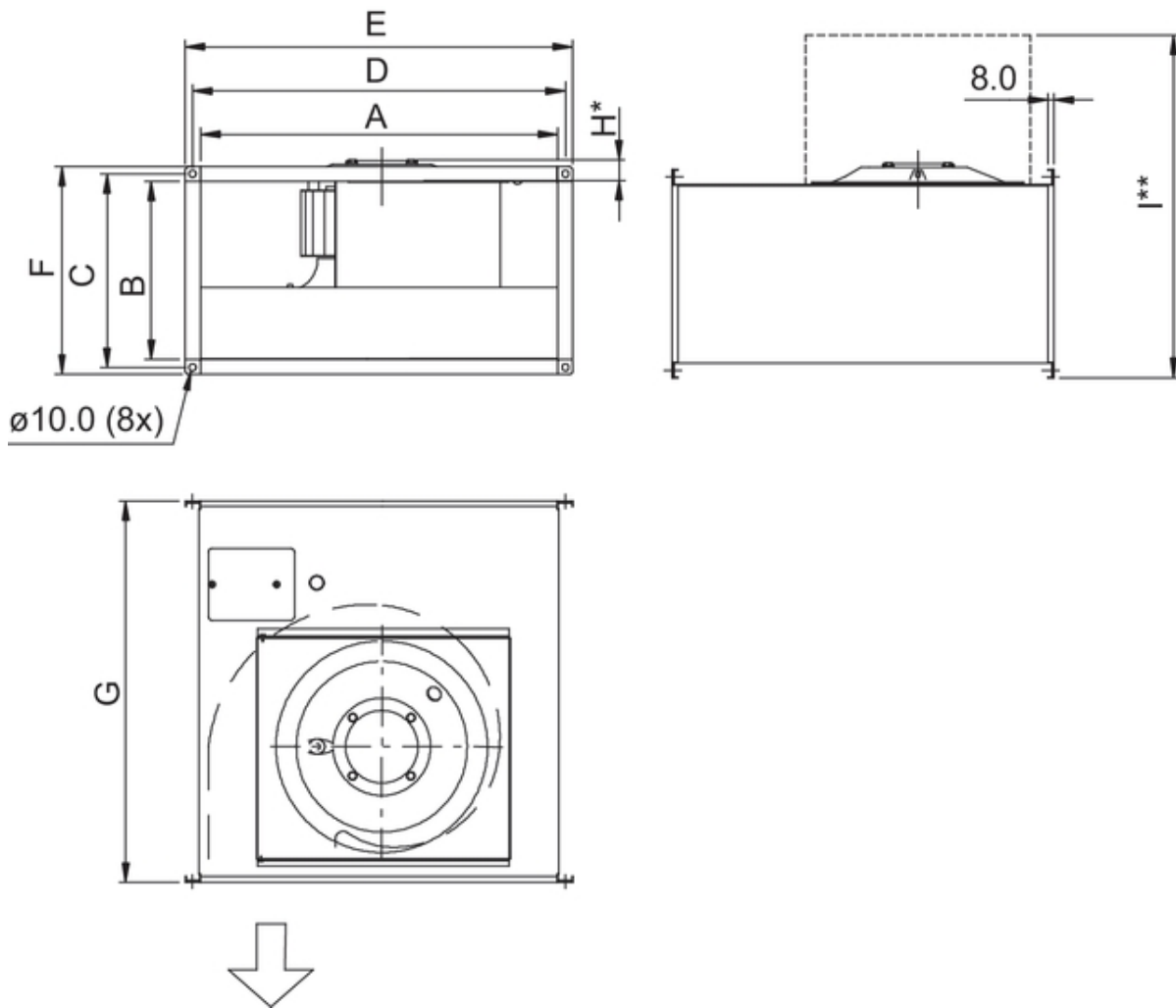
### Max efficiency

Hydraulic data										
▲ Working air flow										0,252 m³/s
▲ Working static pressure										296 Pa
▲ Power										234 W
Speed										1424 r.p.m.
Current										1,02 A
SFP										0,929 W/(l/s)
Voltage										230 V
Sound power level		63	125	250	500	1k	2k	4k	8k	Tot
Inlet	dB(A)	55	64	62	58	60	61	59	54	69
Outlet	dB(A)	52	65	65	66	68	66	65	60	74
Surrounding	dB(A)	41	51	53	45	50	45	43	38	57

## 230V3~ (D)



## Dimensions



	A	B	C	D	E	F	G	H*	I**
KTEX 50-25	498	248	270	520	540	290	532	34,5	610
KTEX 50-30	498	298	320	520	540	340	562	34,5	695
KTEX 60-30	598	298	320	620	640	340	642	52	715
KTEX 60-35	598	348	370	620	640	390	717	54,5	805
KTEX 70-40	698	398	420	720	740	440	787	50	900

H\* = Dimensions from the engine bolts

I\*\* = Dimension with fully open hatch.

## Accessories

### Electric accessories

Trigger unit U-EK230E (30199)


### Accessories


LDR 50-25 Silencer (5070)

FFK 50-25 Filter cassette rect (1752)

DS-EX 50-25 Flex. connection (4116)

## Documentation

 DKEX\_KTEX\_IMO\_141815\_CE\_EN\_A004.pdf (6,24MB)

 Presafe 16 ATEX 8871Q.PDF (261,03kB)

 Presafe17ATEX9970X\_KTEX\_DKEX.PDF (306,91kB)

## Specification text

Circular duct fan for easy and direct installation in ducts. Galvanized steel sheet housing. Copper inlet cone. Service cover. The fan unit is mounted on the service cover for easy cleaning and maintenance. Free-running, forward curved circular impeller made of galvanized steel sheet. Impeller acc. to VDI 2060, balancing quality G 6.3, dynamically balanced in two planes. Explosion proof, voltage controllable external rotor motor. (IP44), maintenance-free, the motor is placed inside the air flow for cooling. PTC with leads to a motor protection device (e.g. Systemair U-EK 230E-IP54). Speed-controlled via a 5-step transformer. Supply cable, led out. For indoor installation. Installation in any mounting position. Suitable to transport explosive atmospheres. Tested acc. to ATEX Directive 2014/34/EU. Explosion proof versions comply with EN 60079-7:2015, EN 14986:2007, EN 60079-0:2012. Improved safety in accordance with **Ex eb IIB+H2 T3 Gb**