

KVK 200 INS. CIRC. DUCT FAN

Item no. 27427

Version: 50 Hz

Document type: **Product card**
 Document date: **2019-07-10**
 Generated by: **Systemair Online Catalogue**



Description

- Speed-controllable
- Integral thermal contacts
- Low noise level
- Easily removable fan assembly

KVK 200-500 models have a double inlet centrifugal fan with forward-curved impellers and a maintenance-free external rotor motor. The fan is mounted on a plate to facilitate easy removal for cleaning and servicing. To protect the motor from overheating the fans have an integral thermal contact with leads for connection to a motor protection device.

The fans can be installed in any position and are easy to connect to spiral ducts using FK mounting clamps. The KVK models are manufactured from galvanised sheet steel and are thermally and acoustically insulated with a 50 mm layer of rockwool with a surface liner which prevents the migration of fibres into the airstream.



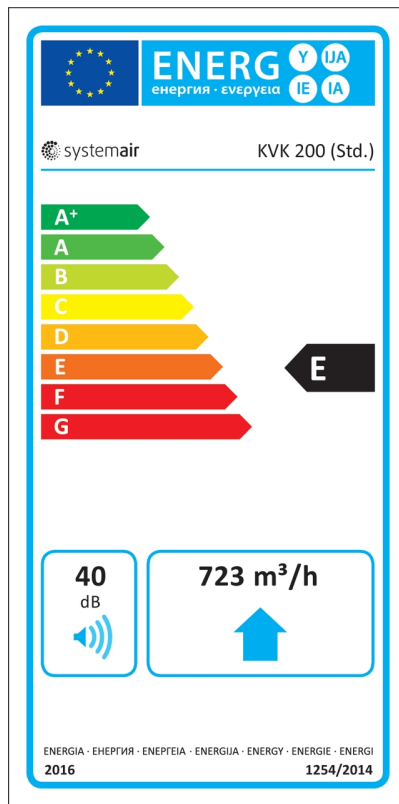
Technical parameters

Nominal data		
Voltage	230	V
Frequency	50	Hz
Phase	1	~
Input power (P1)	191	W
Current	0,837	A
Max. airflow	0,238	m³/s
R.p.m.	2422	r.p.m.
Capacitor	4	µF
Weight	13,9	kg
Temperature data		
Max. temperature of transported air	70	°C
Max. temperature of transported air when speed-controlled	70	°C

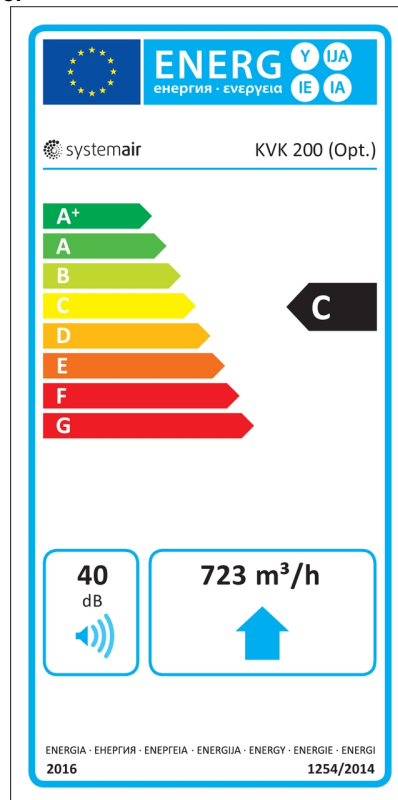
Sound data	
Sound pressure level at 3 m	39,4 dB(A)
Protection / Classification	
Insulation class	F
Enclosure class, motor	IP44
ErP	
Energy class, basic unit	E
Energy class, basic unit option	C
ErP ready	ErP 2016/ErP 2018

Energy class label

Energy class, basic unit

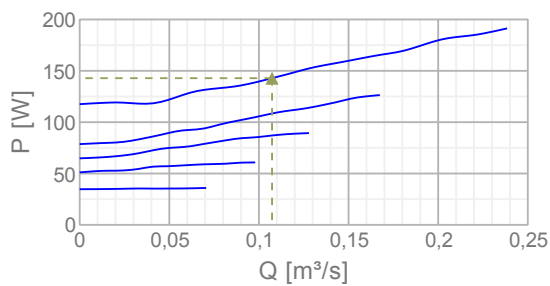
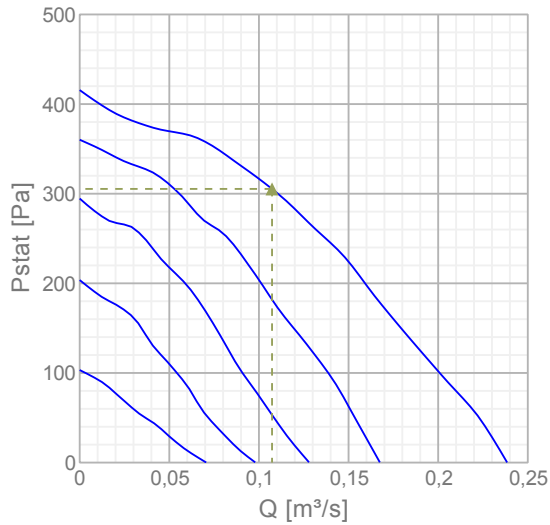


Energy class, unit with local demand control



Diagrams

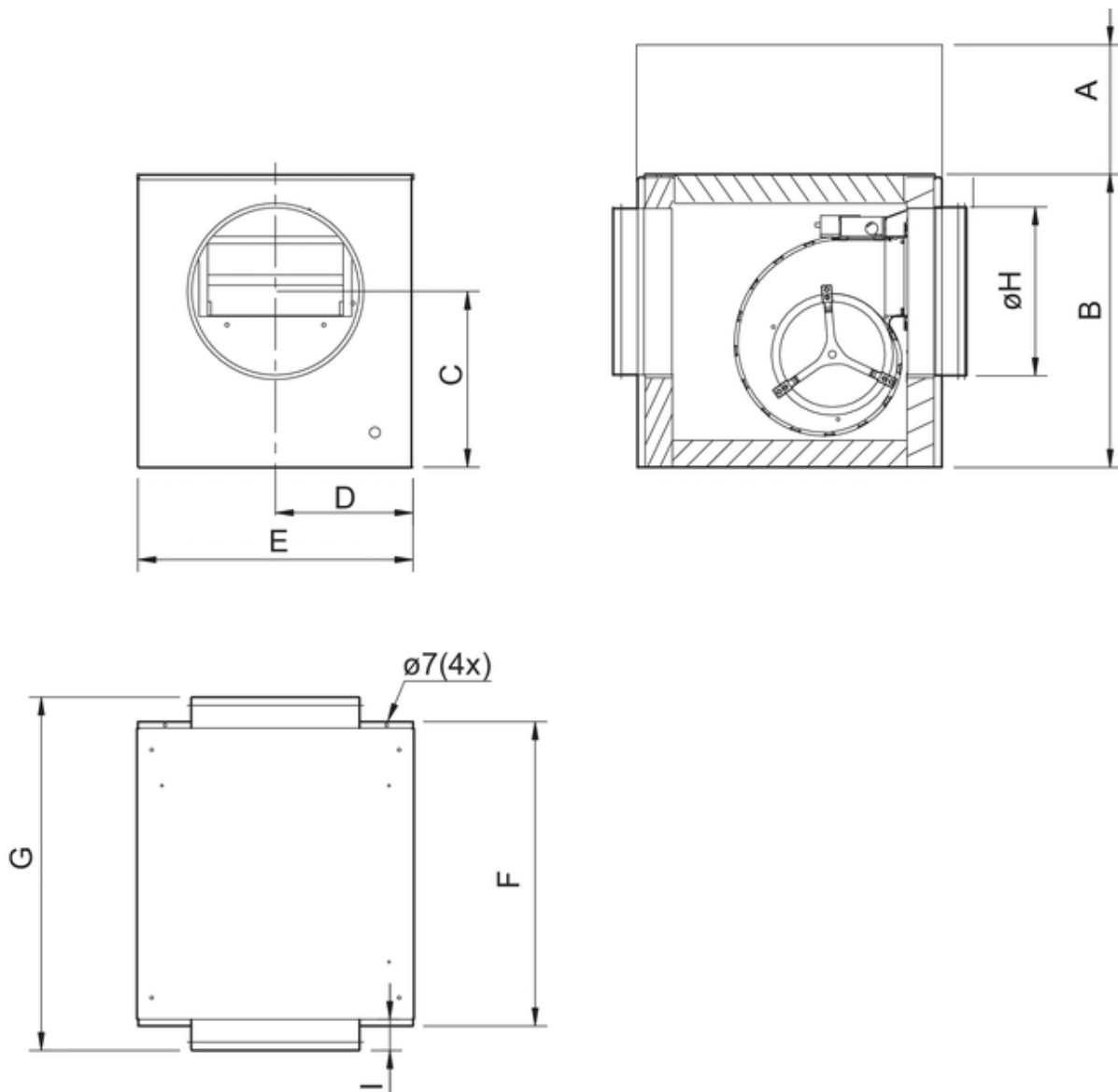
Diagrams



Max efficiency

Hydraulic data										
▲ Working air flow	0,107 m³/s									
▲ Working static pressure	305 Pa									
▲ Power	143 W									
Speed	2663 r.p.m.									
Current	0,629 A									
SFP	1,33 W/(l/s)									
Voltage	230 V									
Sound power level		63	125	250	500	1k	2k	4k	8k	Tot
Inlet	dB(A)	54	58	56	53	46	47	41	38	62
Outlet	dB(A)	59	65	63	67	68	67	64	58	74
Surrounding	dB(A)	34	36	41	41	36	39	32	25	47

Dimensions

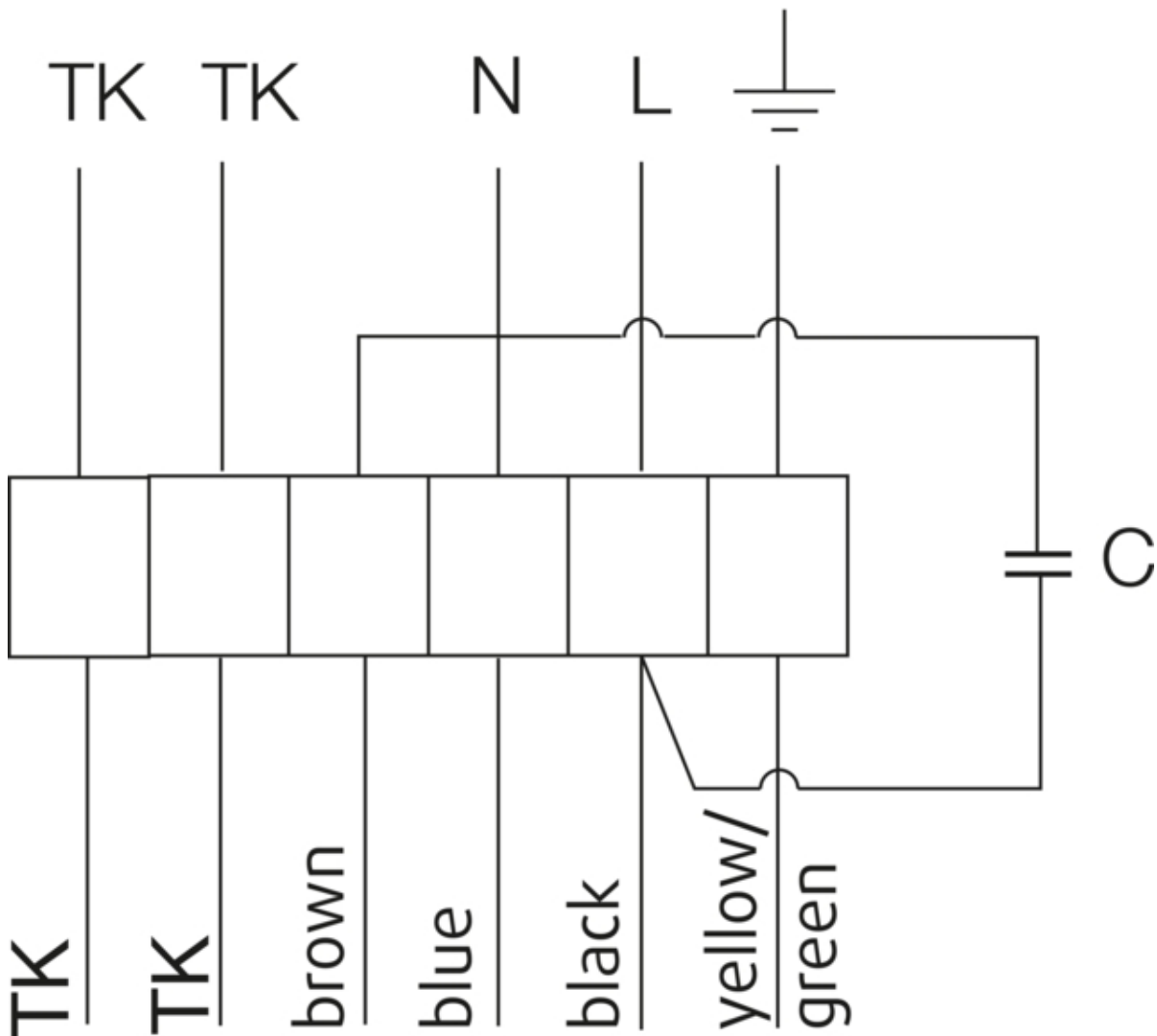


	A*	B	C	D	E	F	G	ØH	I
KVK 200	340	345	191	193	395	395	440	200	20

*= Free area

Wiring

230V 1~



U1 = blue = blau
U2 = black = schwarz
Z = brown = braun
PE = yellow/green = grün-gelb

Accessories


Electric accessories

[REU 1.5 Speed control \(5004\)](#)
[RTRE 1,5 Speed control \(5008\)](#)
[REE 1 Speed control \(5314\)](#)
[REPT 6 Digital regulator \(5698\)](#)
[RT 0-30 Room Thermostat \(5151\)](#)
[S-ET 10 Motor Protection \(5154\)](#)
[S-ET 10E Motor Protection \(5155\)](#)
[CO2RT-R-D Transmitter \(6993\)](#)
[Presence detector/IR24-P \(6995\)](#)
[RETP 6 Temp/Pressure regulator \(32293\)](#)
[STL 1.5 Speed controller \(84251\)](#)
[REV-5POL/05 ON/OFF \(33979\)](#)
[FRQS-E-6A \(37419\)](#)
[FRQ5S-E-6A \(37421\)](#)

Accessories

[CB 200-3,0 230V/1 Duct heater \(5370\)](#)
[CB 200-2,1 230V/1 Duct heater \(5384\)](#)
[CBM 200-5,0 400V/2 Duct heater \(5483\)](#)
[VBF 200 Water heating battery \(1732\)](#)
[CWK 200-3-2,5 Duct cooler.circ \(30023\)](#)
[VBC 200-2 Water heating batt \(5459\)](#)
[LDC 200-600 Silencer \(5194\)](#)
[LDC 200-900 Silencer \(5195\)](#)
[FFR 200 Filter cassette \(1773\)](#)
[FGR 200 Filter cassette \(1812\)](#)
[FK 200 Fast clamp \(1611\)](#)
[VKK-200 Back draft damper \(1626\)](#)
[IGK-200 Wall Grid \(1633\)](#)
[RSK-200 Back draft damper \(5602\)](#)
[SG 200 Protection guard \(5609\)](#)
[VK-20 Louvre shutter \(5639\)](#)
[VBC 200-3 Water heating batt \(9841\)](#)
[THB 200 Hood w.cover pl. black \(134465\)](#)
[CB 200/S1/3,0KW 400V/2Duct hea \(5294\)](#)
[CB 200-5,0 400V/2 Duct heater \(5371\)](#)

Documentation

 [202341_Fans_Instructions_CE_A010.pdf \(1,83MB\)](#)

 [Semko Certificate KVK 1116708.pdf \(1,38MB\)](#)