

KVK 250 INS. CIRC. DUCT FAN

Item no. 27428

Version: 50 Hz

Document type: **Product card**
 Document date: **2019-07-10**
 Generated by: **Systemair Online Catalogue**



Description

- Speed-controllable
- Integral thermal contacts
- Low noise level
- Easily removable fan assembly

KVK 200-500 models have a double inlet centrifugal fan with forward-curved impellers and a maintenance-free external rotor motor. The fan is mounted on a plate to facilitate easy removal for cleaning and servicing. To protect the motor from overheating the fans have an integral thermal contact with leads for connection to a motor protection device.

The fans can be installed in any position and are easy to connect to spiral ducts using FK mounting clamps. The KVK models are manufactured from galvanised sheet steel and are thermally and acoustically insulated with a 50 mm layer of rockwool with a surface liner which prevents the migration of fibres into the airstream.



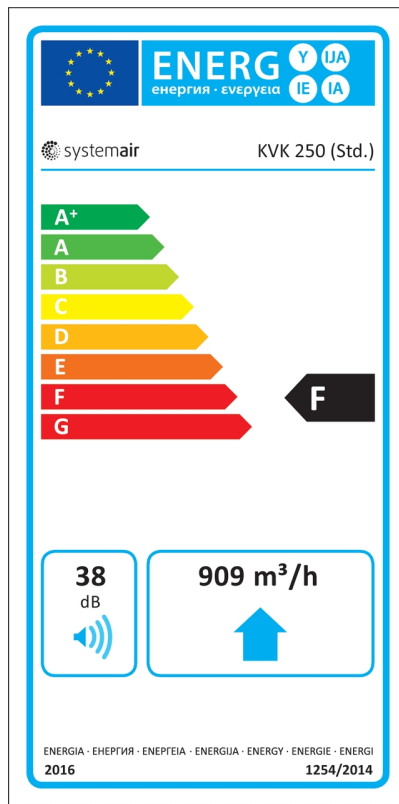
Technical parameters

Nominal data		
Voltage	230	V
Frequency	50	Hz
Phase	1	~
Input power (P1)	266	W
Current	1,18	A
Max. airflow	0,296	m³/s
R.p.m.	1846	r.p.m.
Min. static back pressure	30	Pa
Capacitor	4	µF
Weight	16,6	kg
Temperature data		
Max. temperature of transported air	40,7	°C
Max. temperature of transported air when speed-controlled	40,7	°C

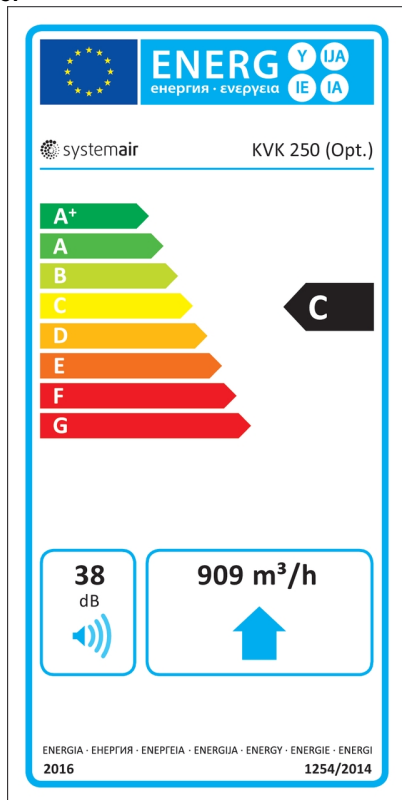
Sound data	
Sound pressure level at 3 m	40,2 dB(A)
Protection / Classification	
Insulation class	F
Enclosure class, motor	IP44
ErP	
Energy class, basic unit	F
Energy class, basic unit option	C
ErP ready	ErP 2016/ErP 2018

Energy class label

Energy class, basic unit

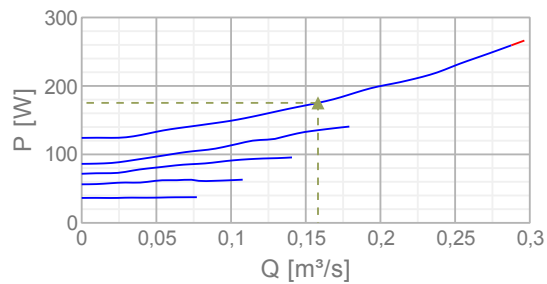
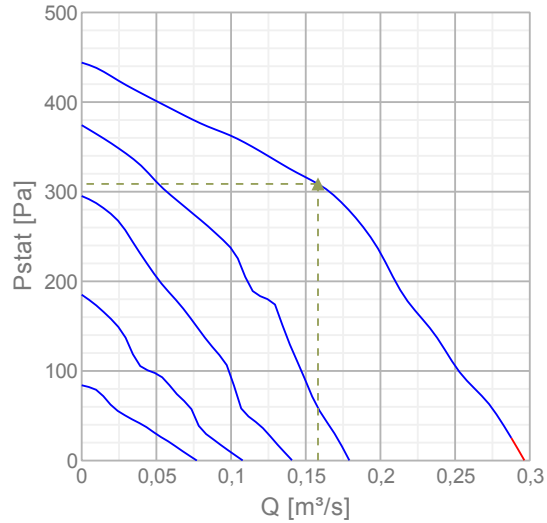


Energy class, unit with local demand control



Diagrams

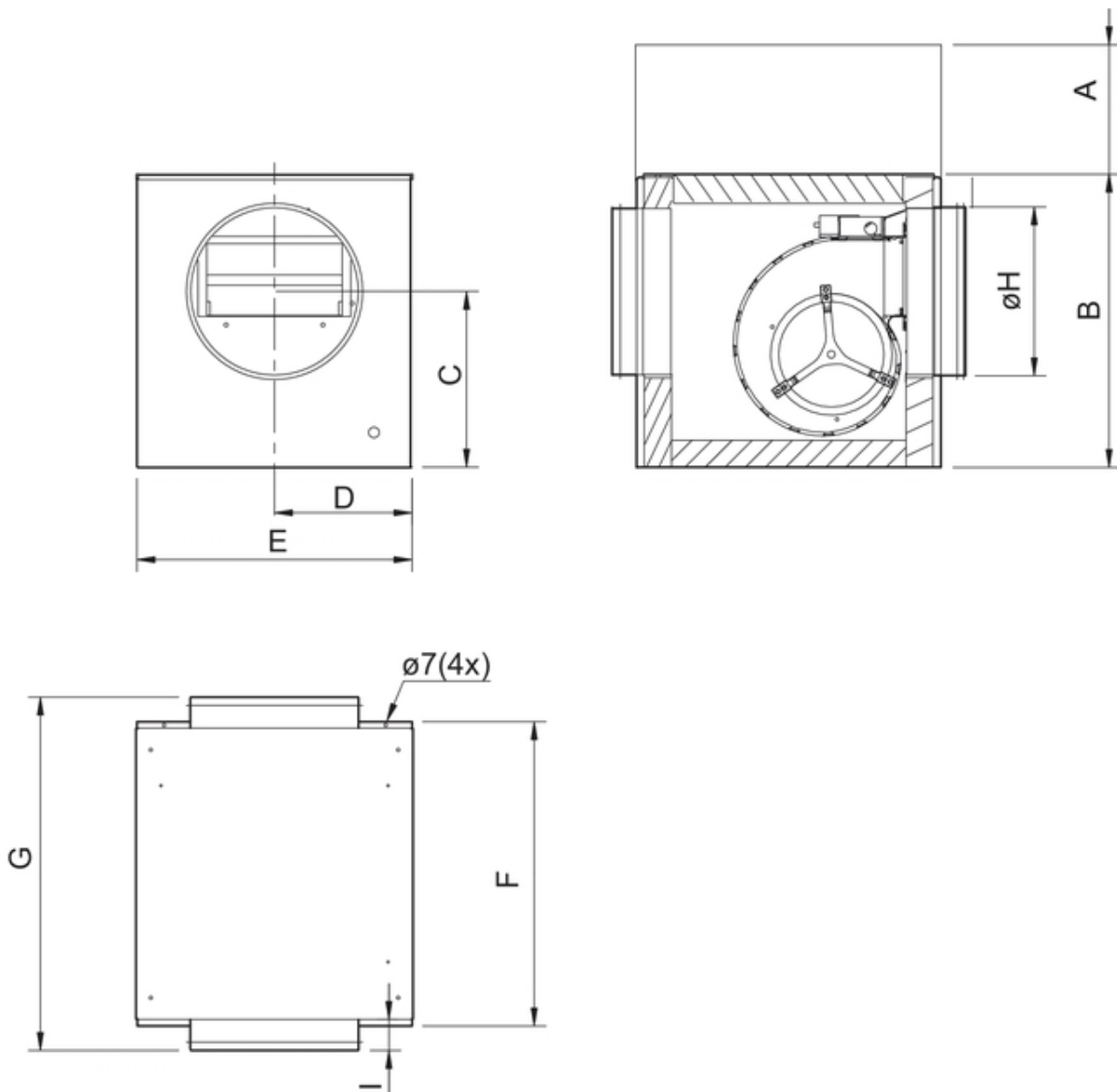
Diagrams



Max efficiency

Hydraulic data										
▲ Working air flow										0,158 m ³ /s
▲ Working static pressure										309 Pa
▲ Power										175 W
Speed										2517 r.p.m.
Current										0,766 A
SFP										1,11 W/(l/s)
Voltage										230 V
Sound power level		63	125	250	500	1k	2k	4k	8k	Tot
Inlet	dB(A)	59	59	61	55	52	51	46	40	65
Outlet	dB(A)	60	70	66	68	70	70	65	60	77
Surrounding	dB(A)	38	36	44	39	37	38	32	24	47

Dimensions

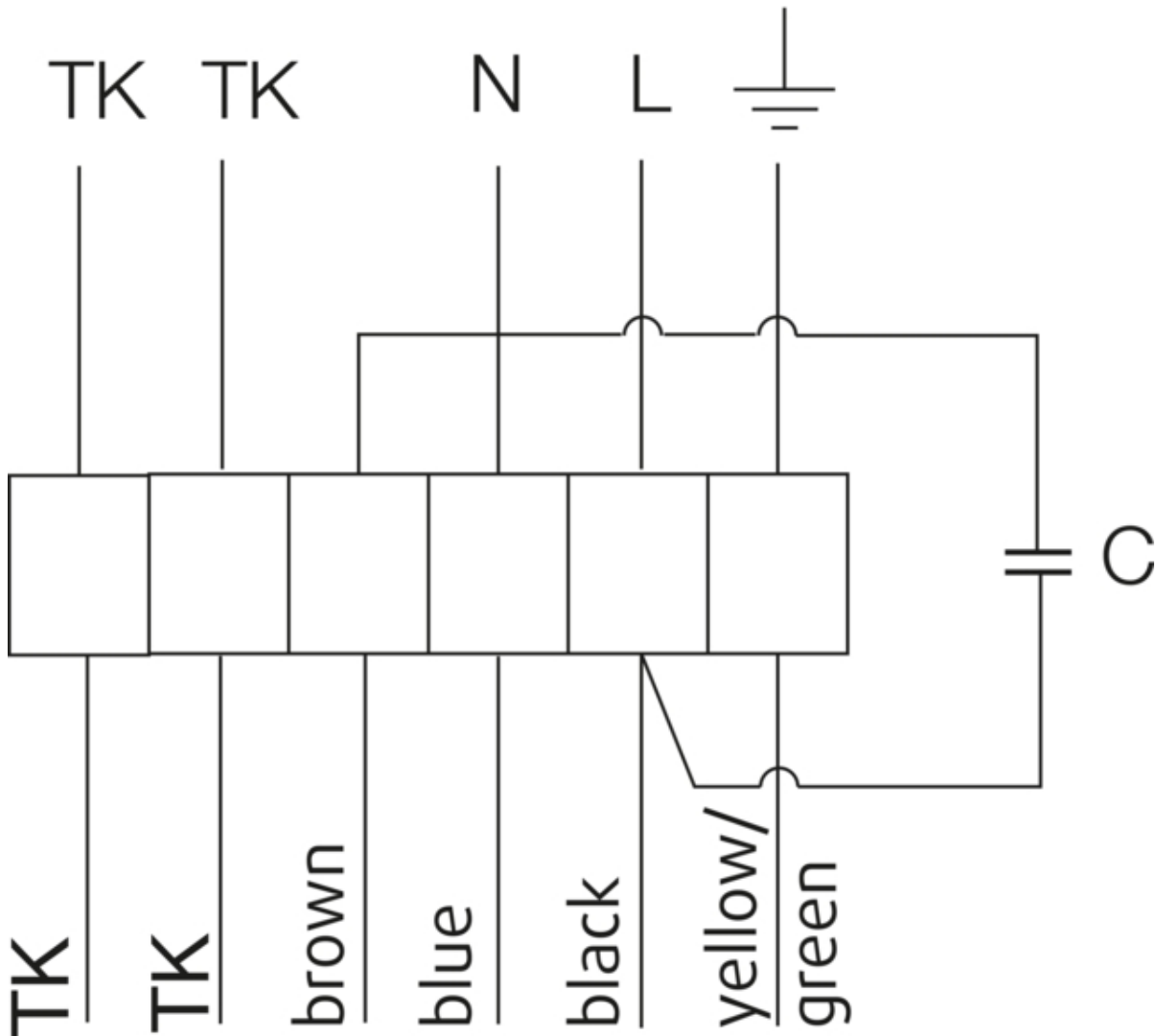


	A	B	C	D	E	F	G	øH	I
KVK 250	380	385	198	228	460	400	490	250	40

*= Free area

Wiring

230V 1~



U1 = blue = blau

U2 = black = schwarz

Z = brown = braun

PE = yellow/green = grün-gelb

Accessories


Electric accessories

[REU 1.5 Speed control \(5004\)](#)
[RTRE 1.5 Speed control \(5008\)](#)
[REE 2 Speed control \(5316\)](#)
[REPT 6 Digital regulator \(5698\)](#)
[RT 0-30 Room Thermostat \(5151\)](#)
[S-ET 10 Motor Protection \(5154\)](#)
[S-ET 10E Motor Protection \(5155\)](#)
[CO2RT-R-D Transmitter \(6993\)](#)
[Presence detector/IR24-P \(6995\)](#)
[RETP 6 Temp/Pressure regulator \(32293\)](#)
[STL 3 Speed controller \(84261\)](#)
[REV-5POL/05 ON/OFF \(33979\)](#)
[FRQS-E-6A \(37419\)](#)
[FRQ5S-E-6A \(37421\)](#)

Accessories

[CB 250-9,0 400V/3 Duct heater \(5373\)](#)
[CB 250-3,0 230V/1 Duct heater \(5385\)](#)
[VBF 250 Water heating battery \(1733\)](#)
[CWK 250-3-2,5 Duct cooler.circ \(30024\)](#)
[VBC 250-2 Water heating batt \(5460\)](#)
[LDC 250-900 Silencer \(5196\)](#)
[FFR 250 Filter cassette \(1776\)](#)
[FGR 250 Filter cassette \(1815\)](#)
[FK 250 Fast clamp \(1612\)](#)
[VKK-250 Back draft damper \(1627\)](#)
[RSK-250 Back draft damper \(5603\)](#)
[SG 250 Protection guard \(5610\)](#)
[VK-25 Louvre shutter \(5640\)](#)
[CBM 250-6,0 400V/2 Duct heater \(9089\)](#)
[VBC 250-3 Water heating batt \(9843\)](#)
[CB 250-6,0 400V/2 Duct heater \(5372\)](#)

Documentation

 [202341_Fans_Instructions_CE_A010.pdf \(1,83MB\)](#)

 [Semko Certificate KVK 1116708.pdf \(1,38MB\)](#)

Specification text

It's a reliable in operation, maintenance- free, double- sided and soundproofed circular duct fan. The box consists of electroplated steel plate with acoustic insulation and heat insulation made with mineral rock wool with a strength of 50 millimetre, witch should avoid the migration of fibres into the air flow. It's a compact construction with a low noise level. Surfaces which are situated in the inside are protected trough perforated and electroplated steel plate. The fan device, which is responsible for cleaning and attendance is very easy to disassemble. With the help of FK - mounting clamps it is easy to connect the fans to duct and so they can also be installed in each fitting position. The fan has a radial impeller with backwards-curved impeller vane made out of electroplated steel plate. The actuation is carried out by a maintenance- free external rotor motor. It is possible to speed- control the fan by reducing the tension with a thyristor or a transformer. For protecting the engine according to EN 60335-2-80 a thermal contact with completed lines to a motor protection device is built in. For annealing the engine is designed inside the air flow. Impeller according to VDI 2006, quality category Q6,3 and dynamically weigh heavy in two levels.