

RS 50-25 SILEO

Item no. 19531

Version: 50 Hz

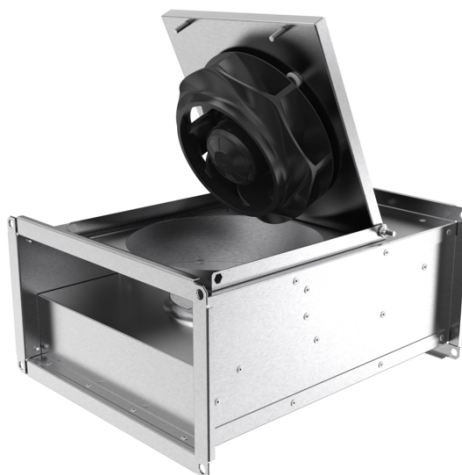
Document type: **Product card**
 Document date: **2019-06-25**
 Generated by: **Systemair Online Catalogue**



Description

- Speed-controllable
- Integral thermal contacts
- Can be installed in any position
- Maintenance-free and reliable

The RS models have impellers with backward-curved blades and external rotor motors. The motor and impeller are mounted on the access cover to facilitate easy maintenance. To protect the motor from overheating the fan has an integral thermal contact with electrical reset. The fans can be installed in any position and are easy to connect using the DS flexible connections. The casing is manufactured from galvanised sheet steel.

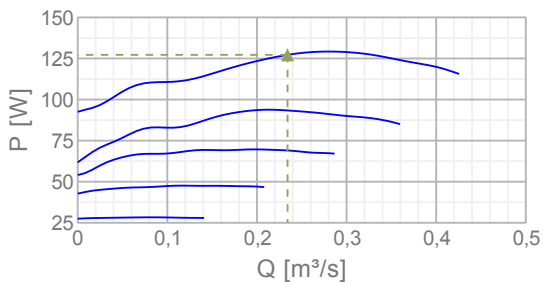
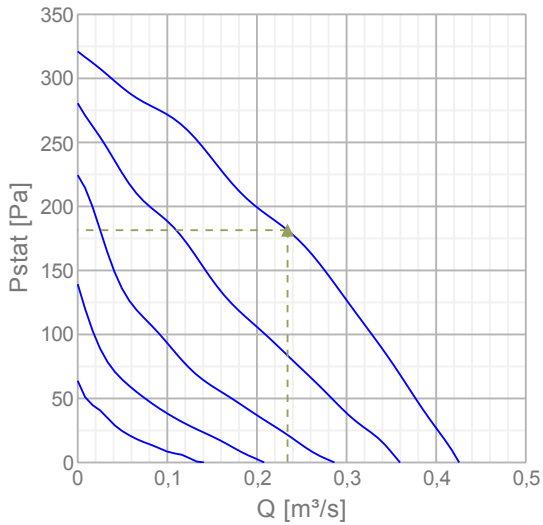


Technical parameters

Nominal data		
Voltage	230	V
Frequency	50	Hz
Phase	1	~
Input power (P1)	129	W
Current	0,586	A
Max. airflow	0,426	m ³ /s
R.p.m.	1329	r.p.m.
Capacitor	4	µF
Weight	15,3	kg
Temperature data		
Max. temperature of transported air	70	°C
Max. temperature of transported air when speed-controlled	70	°C
Sound data		
Sound pressure level at 3 m	46,3	dB(A)
Protection / Classification		
Insulation class	B	
Enclosure class, motor	IP44	

Diagrams

Diagrams



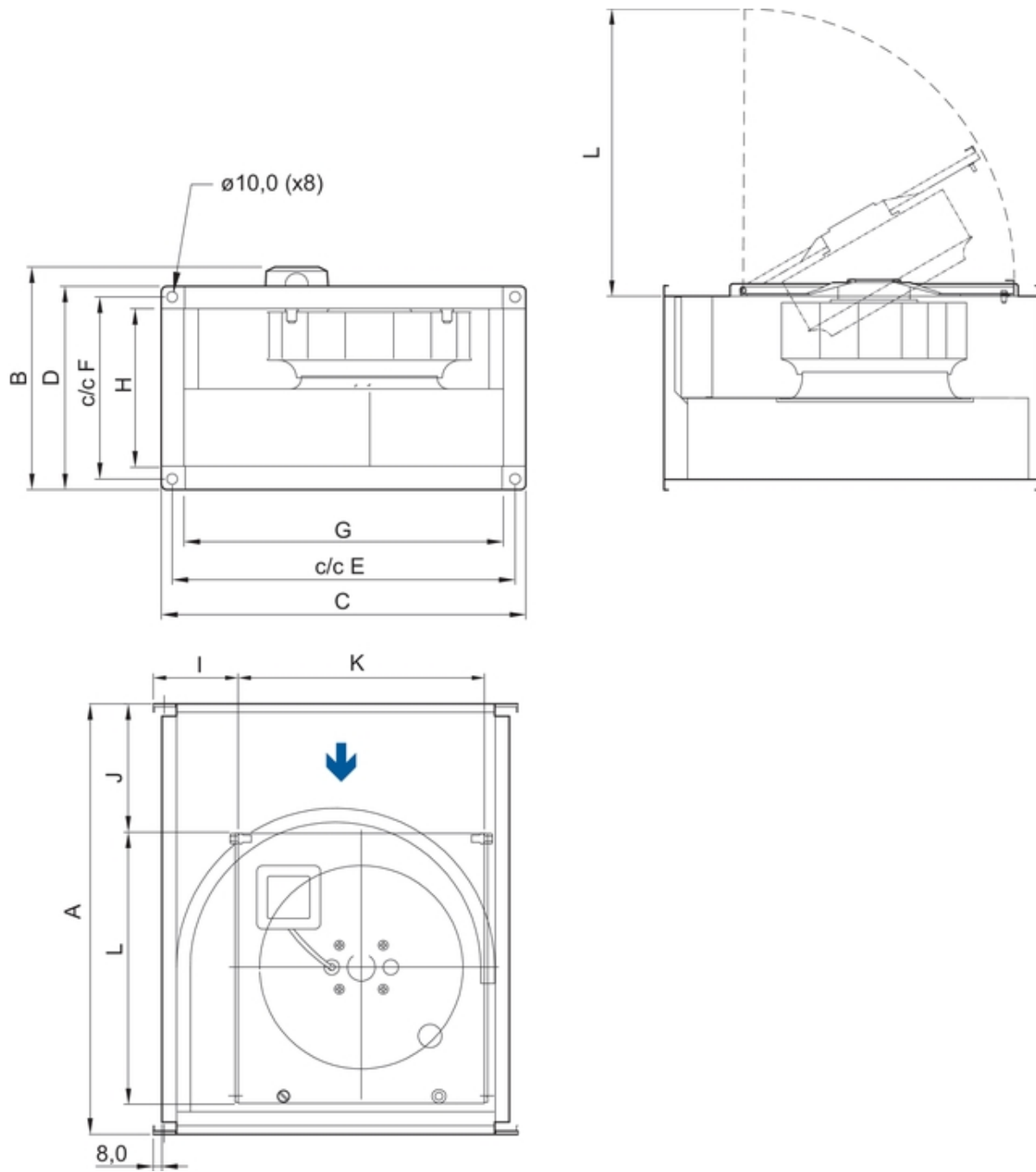
Max efficiency

Hydraulic data

▲ Working air flow	0,234 m ³ /s
▲ Working static pressure	181 Pa
▲ Power	127 W
Speed	1332 r.p.m.
Current	0,579 A
SFP	0,543 W/(l/s)
Voltage	230 V

Sound power level		63	125	250	500	1k	2k	4k	8k	Tot
Inlet	dB(A)	45	63	57	54	56	50	44	36	65
Outlet	dB(A)	49	60	61	62	61	57	50	41	68
Surrounding	dB(A)	30	49	49	44	44	41	34	23	53

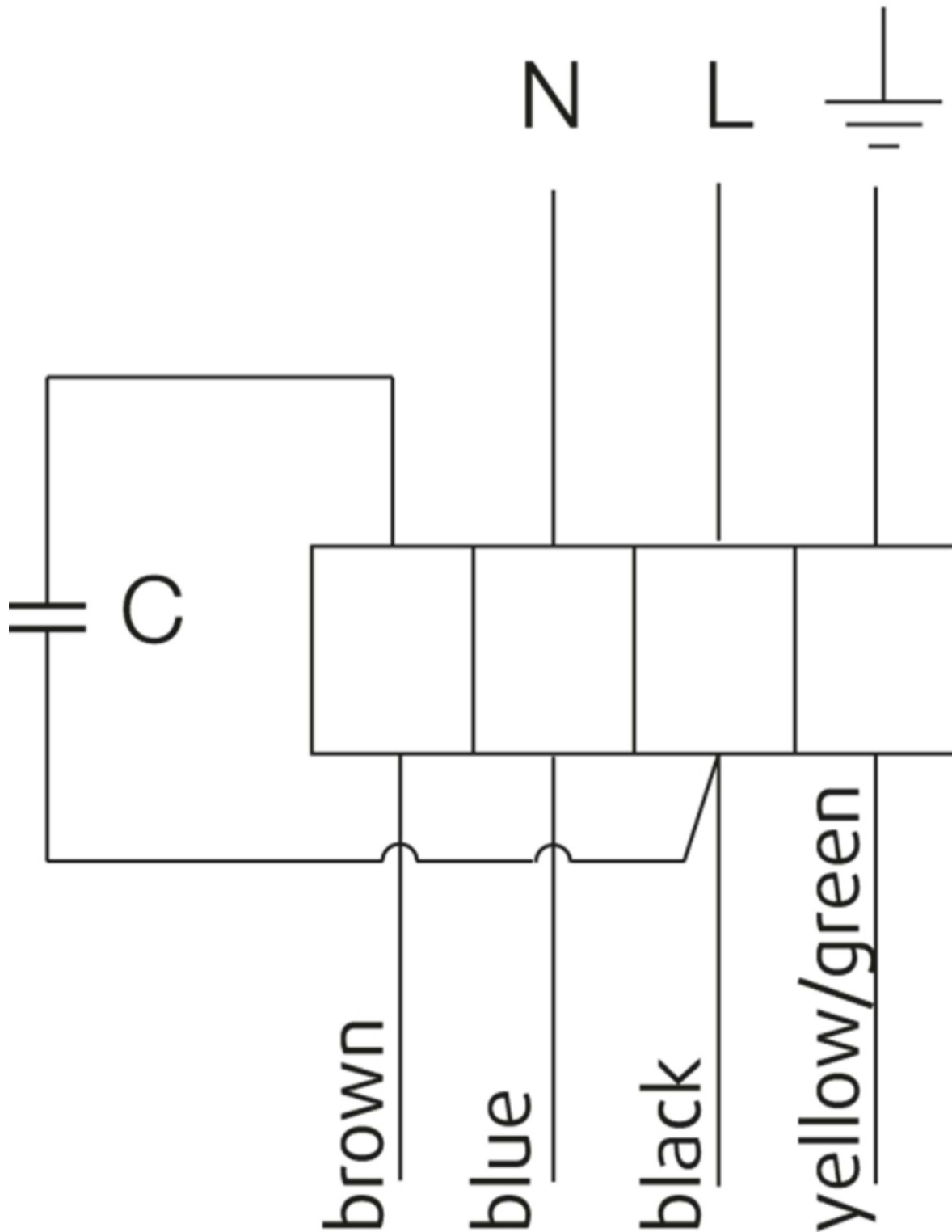
Dimensions



RS	A	B	C	D	E	F	G	H	I	J	K	L
50-25	532	317	540	290	520	270	498	248	125	85,5	366	423

Wiring

230V 1~



U1 = blue = blau

U2 = black = schwarz

Z = brown = braun

PE = yellow/green = grün-gelb

Accessories


Electric accessories

[RE 1.5 Speed control \(5000\)](#)
[REU 1.5 Speed control \(5004\)](#)
[REE 1 Speed control \(5314\)](#)
[REPT 6 Digital regulator \(5698\)](#)
[RT 0-30 Room Thermostat \(5151\)](#)
[CO2RT-R-D Transmitter \(6993\)](#)
[Presence detector/IR24-P \(6995\)](#)
[RETP 6 Temp/Pressure regulator \(32293\)](#)
[DTV200 \(6261\)](#)
[STL 1.5 Speed controller \(84251\)](#)
[REV-5POL/05 ON/OFF \(33979\)](#)
[FRQS-E-6A \(37419\)](#)
[FRQ5S-E-6A \(37421\)](#)
[DTV500A \(96807\)](#)

Accessories

[RBM 50-25/15 400V/3 Duct heater \(5451\)](#)
[PGK 50-25-3-2,0 Duct cooler \(6606\)](#)
[VBR 50-30-2 Water heating batt \(5465\)](#)
[VBR 50-25-4 Water heating batt \(5472\)](#)
[LDR 50-25 Silencer \(5070\)](#)
[FFK 50-25 Filter cassette rect \(1752\)](#)
[DS 50-25 Flexible connection \(1542\)](#)
[GFL 50-25 Counter flange \(2706\)](#)
[VK-50-25 Louvre shutter \(5647\)](#)
[DXRE 50-25-3-2,5 Duct cooler \(7952\)](#)
[RB 50-25/15-1 400V/3 Duct heat \(9629\)](#)
[RB 50-25/22-2 400V/3 Duct heat \(9633\)](#)
[RKT-SYS-500x250-S \(43630\)](#)
[RK-SYS-500x250-R \(43644\)](#)
[RK-SYS-500x250-S \(43653\)](#)

Documentation

 [202341_Fans_Instructions_CE_A010.pdf \(1,83MB\)](#)

Specification text

The box consists of electroplated steel plate. The fans have a radial impeller with backwards- curved impeller vanes which are pivoting. For making cleaning and attendance easier the fan device is assembled at the folding closure head. The fans can be installed in each fitting position and with the help of the flexible DS connection they are very easy to built in. The actuation is carried out by a foolproofed, maintenance- free and speed-controlled external rotor motor. For protecting the motor, the production run has built in thermal contacts with manually reset device with completed lines to a motor protection device according to EN 60335-2-80. For annealing the engine is designed inside the air flow. Impeller according to VDI 2060, quality category Q6,3 and dynamically weigh heavy in two levels.