

RVF 100 M WALL FAN

Item no. 1254

Version: 50 Hz

Document type: **Product card**

Document date: **2019-06-24**

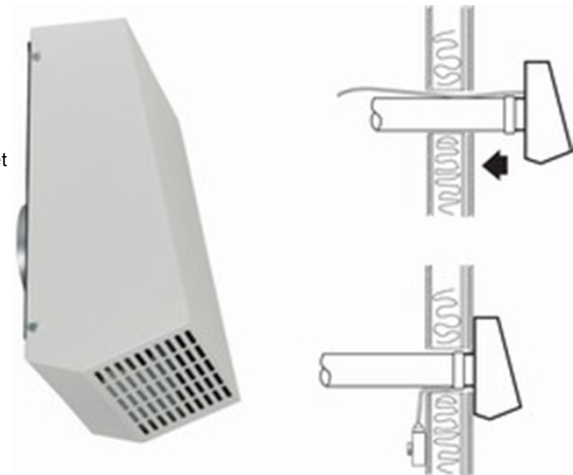
Generated by: **Systemair Online Catalogue**



Description

- Speed-controllable
- For mounting on external walls
- Useful where internal space is limited

The RVF models are exhaust-air fans for installation on external walls. The unit consists of an impeller with backward-curved blades and a casing in galvanised sheet steel with a white powder-paint coating. All ambient noise created by the fan is kept outside the building if it is installed on an external wall.



Technical parameters

Nominal data	
Voltage	230 V
Frequency	50 Hz
Phase	1 ~
Input power (P1)	27,7 W
Current	0,161 A
Max. airflow	0,0555 m³/s
R.p.m.	2489 r.p.m.
Weight	3,5 kg
Temperature data	
Max. temperature of transported air	70 °C
Max. temperature of transported air when speed-controlled	70 °C
Sound data	
Sound pressure level at 10 m	25,7 dB(A)
Protection / Classification	
Insulation class	B
Enclosure class, motor	IP44

ErP

ErP ready

ErP 2016/ErP 2018

Energy class, basic unit

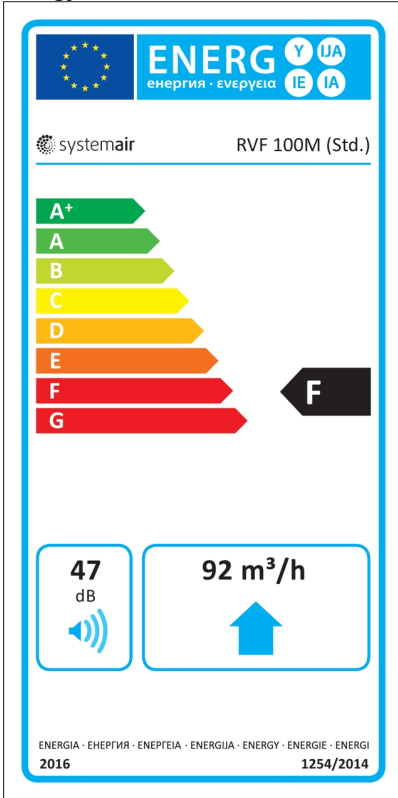


Energy class, basic unit option

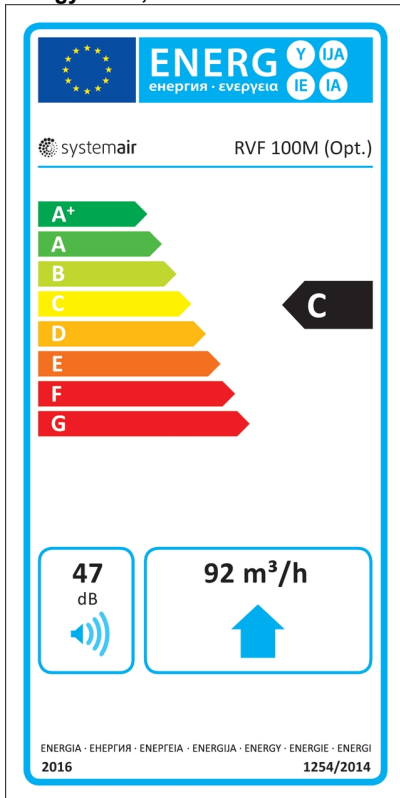


Energy class label

Energy class, basic unit

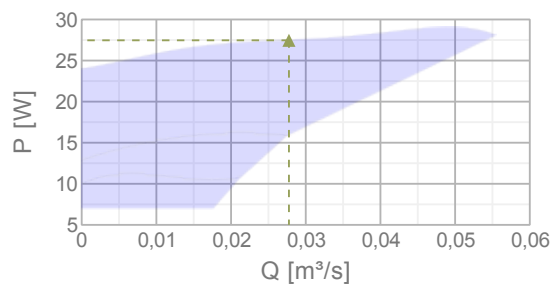
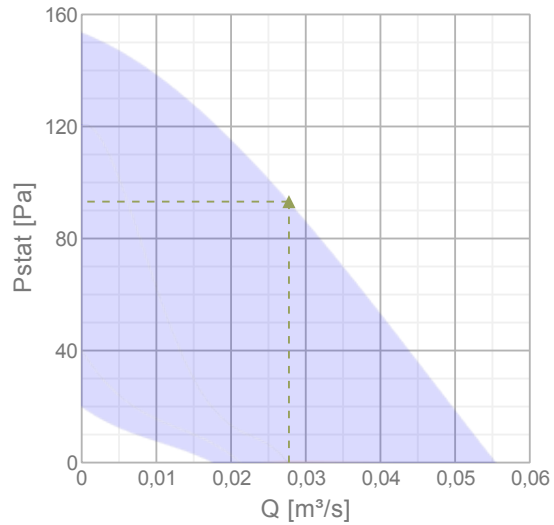


Energy class, unit with local demand control



Diagrams

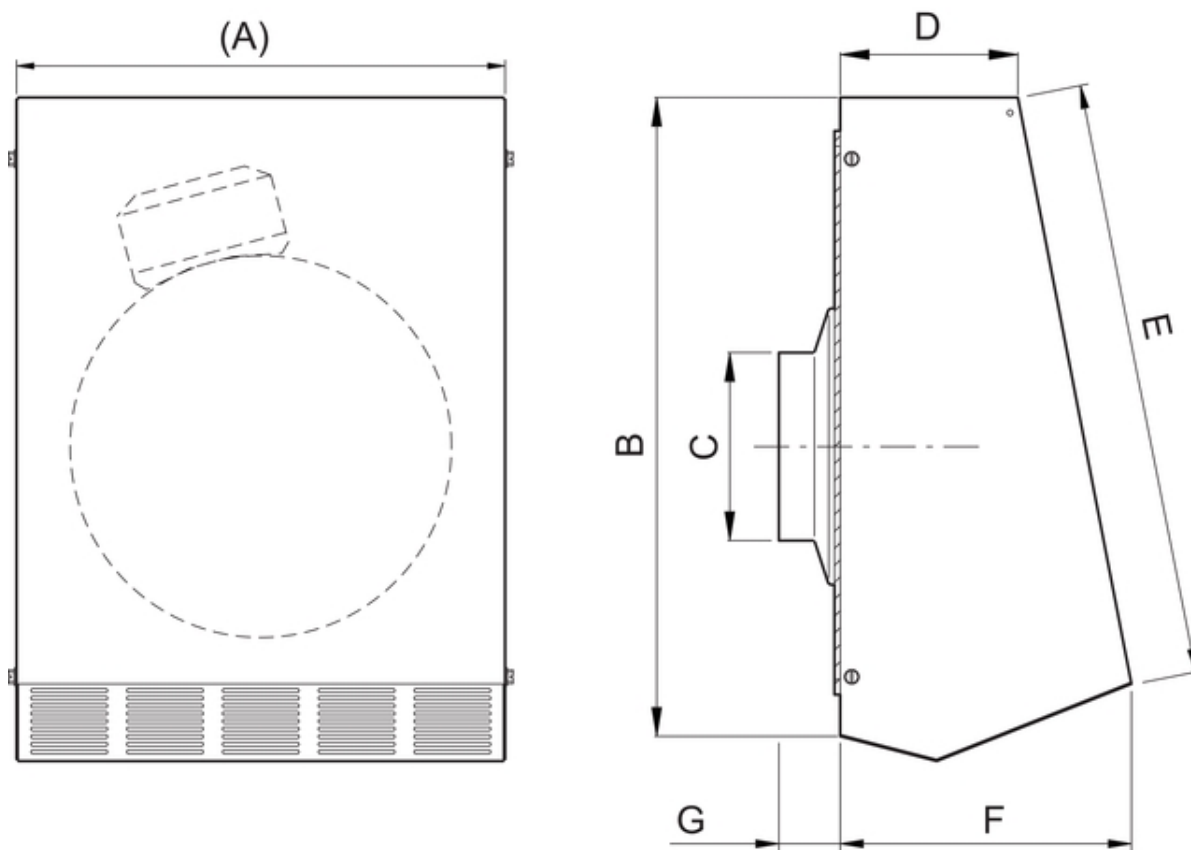
Diagrams



Max efficiency

Hydraulic data										
▲ Working air flow										0,0277 m³/s
▲ Working static pressure										93,2 Pa
▲ Power										27,5 W
Speed										2515 r.p.m.
Current										0,161 A
SFP										0,99 W(l/s)
Voltage										230 V
Sound power level		63	125	250	500	1k	2k	4k	8k	Tot
Inlet	dB(A)	43	60	56	57	53	49	37	23	63
Outlet	dB(A)	24	49	50	49	52	48	37	25	57

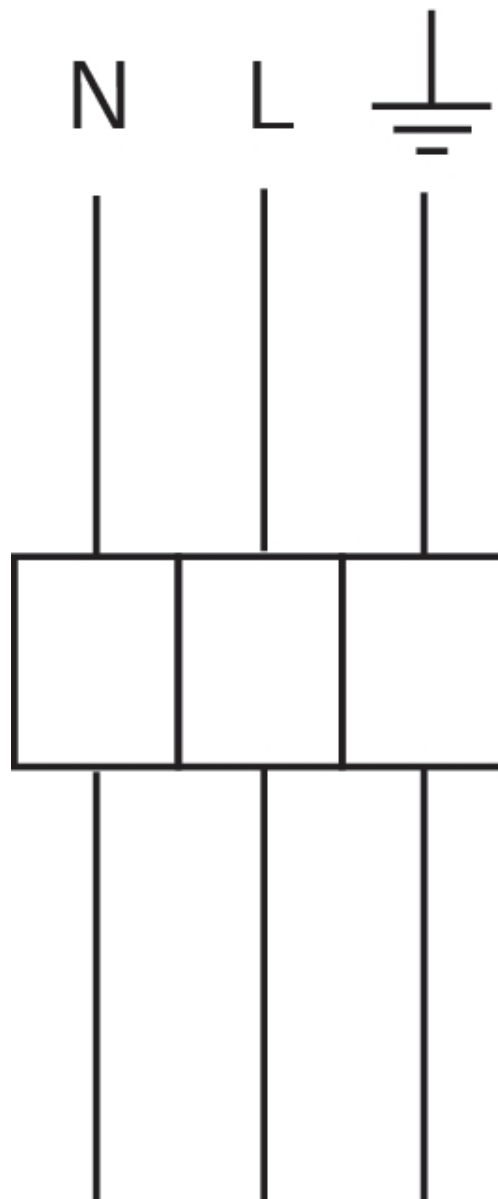
Dimensions



	A	B	C	D	E	F	G
RVF 100	255	333	100	92,7	311,3	152	32

Wiring

230V 1~



Accessories

Electric accessories

- [RE 1,5 Speed control \(5000\)](#)
- [REE 1 Speed control \(5314\)](#)
- [RT 0-30 Room Thermostat \(5151\)](#)
- [CO2RT-R-D Transmitter \(6993\)](#)
- [Presence detector/IR24-P \(6995\)](#)
- [DTV200 \(6261\)](#)
- [REV-3POL/03 ON/OFF \(33978\)](#)
- [DTV500A \(96807\)](#)

Accessories

- [RSK-100 Back draft damper \(5597\)](#)
- [SG 100 Protection guard \(5606\)](#)

Documentation

 RVF_IMO_200529_SE_GB_A002_A5.pdf (267,45kB)

 Certificate S-mark RVF 1211221.pdf (554,45kB)

Specification text